

**JAPAN
BRAND**
Jewellery Collection



JAPAN BRAND PAVILION

Jewellery & Gem WORLD Hong Kong 2025

香港珠寶首飾展覽會2025

展會日期

2025年9月17日-21日

展會位置

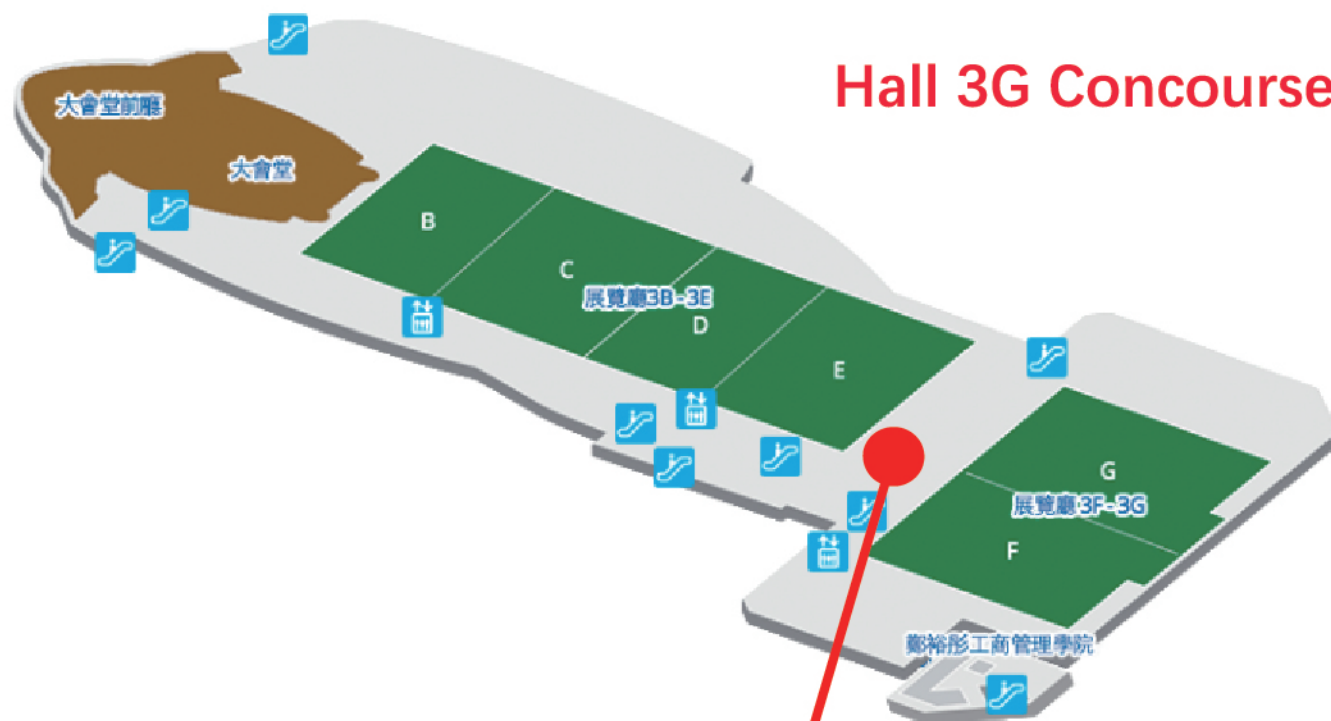
Hong Kong Convention & Exhibition Centre
(Hall 3G Concourse, Booth No.3M309-3M318)

香港會議展覽中心

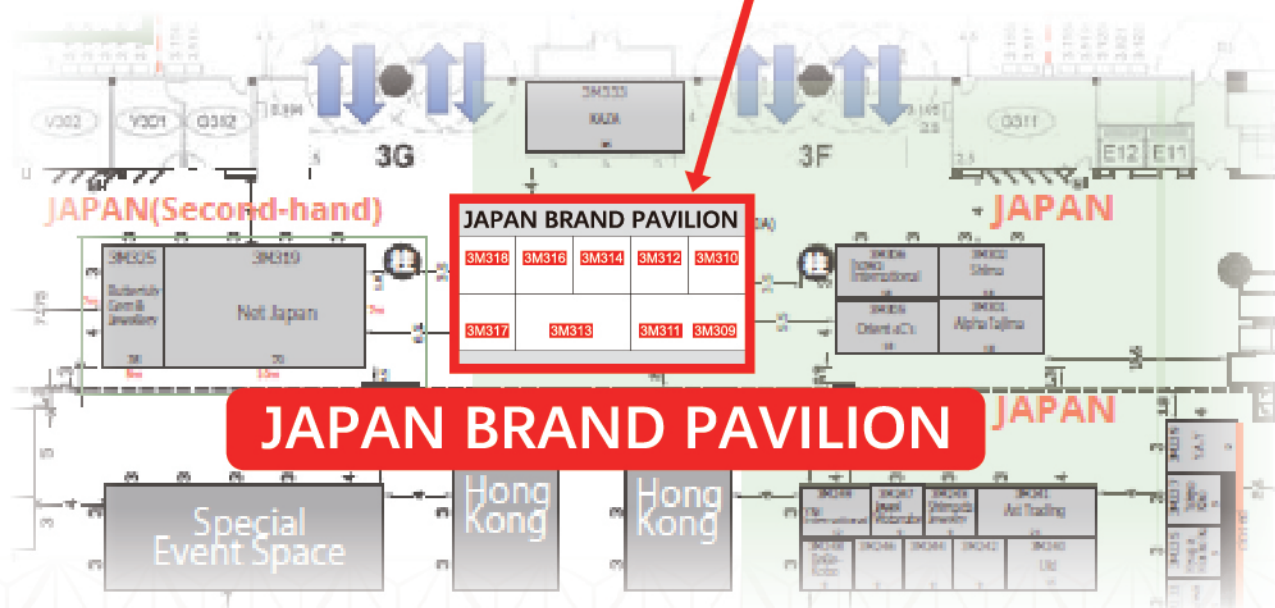
展覽廳3G大堂 3M309-3M318展位



No./編號	Booth No./展位編號	Brand Name/參展品牌名稱
01	3G728	sowi
02	3G618	mysha
03	3G736	OUCA
04	GHF26	Kashikey Brown Diamond
05	1B430	NAGAHORI
06	1B430	KYOTO BRUCE
07	3G837	RUGGED MIND
08	3G639	Dancing Stone
09	3M310	AbHeri
10	3M312	KAJI JEWELLERY ART
11	3M314	OKURADO
12	3M316	etna
13	3M318	PFE TAKASHI DEGUCHI
14	3M317	SAKURA DIAMOND

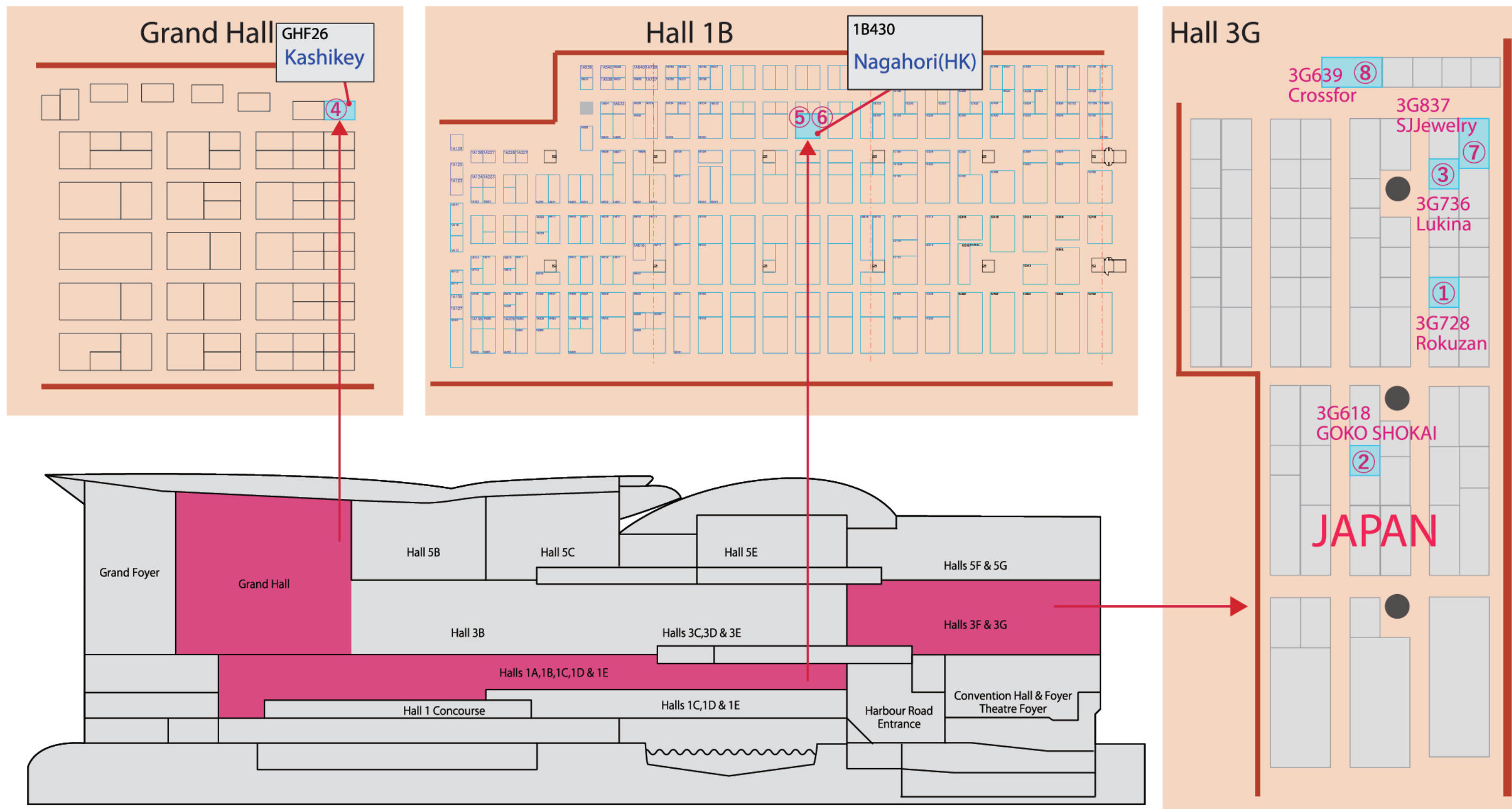


Hall 3G Concourse



高玻璃櫃展示的獨立展臺位置/Booth Location for High Case Exhibitors

圖示為前頁①～⑧所示高玻璃櫃展示品牌企業的獨立展位位置
Independent booth locations for high-case Exhibitors ① to ⑧ from the previous page content





ROKUZAN was established in 1981 and creates jewelry that faithfully follows the techniques used in the Victorian era to design elaborate and delicate antique jewelry reminiscent of that period.

ROKUZAN CO., LTD. (株式會社礫山) 在 1981 年成立于日本東京，是一家以企劃為主體的首飾制造商。我們追求復古珠寶獨具的氣質與美感，將英國維多利亞時代精巧的傳統技法和繁復且華麗的設計，重現于我們的原創飾品。商品企劃、制造、販售，一手包辦，并攜手位于泰國的關係企業，將礫山的商品推廣至世界 20 多個國家。



① STARDUST Collection / 星塵系列

A collection of stars connected in a diameter of 2 mm. The most popular items among all sowi products.

直徑 2 mm 的星星連成一線，為 sowi 最受歡迎的系列之一。



② AURORA Collection / 極光系列

This collection features slender opals set in simple frames for a sophisticated look. 將細長切割的蛋白石鑲嵌于簡潔的長方形石座，造就優雅精緻的人氣作品。



③ WAXING MOON Collection / 上弦月系列

A collection depicting the waxing moon with mother of pearl.

以白母貝表現出從上弦月至盈月的過程系列。



④ HAPPINESS BRINGER Collection / 帶來幸福之物系列

Things that bring happiness - Wind, Water, Bird feathers, Cotton fluff, Acorns. A collection based on these motifs.

帶來幸福之物—風・水・鳥羽・棉花・橡果—以這些元素為靈感而誕生的系列。

公司名稱/Company Name: ROKUZAN CO., LTD.

地址/Address: 8F, Honishi 8, Stork Building, 3-2-6 Honishimachi, Nihonbashi, Chuo-ku, Tokyo

東京都中央区日本橋本石町3-2-6 ストークビルディング本石8F

聯繫電話/Phone Number: (+81) 3-3231-0211

聯繫人/Contact Person: 蕭培源 (Yomogi)

E-mail: hyomogi@rokuzan.co.jp

<https://www.rokuzan.co.jp/>





mysha is a gender-fluid jewelry brand that celebrates individuality beyond gender, race, and fixed ideas. Inspired by “Fluidity,” we create silver pieces that capture movement and change, offering wearable art to express your true self.

mysha是一個無性別珠寶品牌，致力於擁抱超越性別、種族與既定框架的獨特個體。以「流動性」為靈感，我們創作捕捉動態與變化的銀飾作品，提供可佩戴的藝術來表達真實自我。



A voluminous drop ring inspired by the flow of water — a statement piece that enhances any look.

以水流為靈感的豐盈水滴戒指——一件能提升整體造型的宣言作品。



The droplet-inspired, voluminous yet sleek design brings refined elegance to your ears.

水滴啟發的豐盈卻流線設計，為耳際帶來精緻優雅。



A ring inspired by the “milk crown” formed when a droplet hits the surface. Its plump design adds a touch of playful charm.

靈感源自水滴撞擊表面時形成的「牛奶皇冠」戒指。飽滿設計增添一抹玩味魅力。



An asymmetrical open ring inspired by the splash of bursting water droplets.

以迸濺水花為靈感的不對稱開口戒指。

公司名稱/Company Name: Goko Shokai Co., Ltd.

地址/Address: 2-10-7 Yuda, Kofu City, Yamanashi Prefecture

山梨県甲府市湯田2-10-7

聯繫電話/Phone Number: 055-232-3321

聯繫人/Contact Person: 望月 麻衣 (MOCHIZUKI MAI)

E-mail: mochizuki@mysha.jp

<https://mysha.jp/>





We are LUKINA Co., Ltd., a company specializing in planning, designing, procuring materials, manufacturing, and distributing fashionable jewelries, all conducted in-house at LUKINA.

我們是LUKINA株式會社，一家專注于時尚珠寶的策劃、設計、原料採購、生產及分銷的全產業鏈企業，所有環節均為自營。



① Collana Uno



② Anello Uno



③ Anello Uno Doppio



④ Anello Otto Doppio

Fashionable designs inspired from the numbers “8” and “1”, with beautiful curves and strong straight lines.
以數字「8」和「1」為靈感的時尚設計，融合優美曲線與俐落直線。

公司名稱/Company Name: LUKINA Co., Ltd.

地址/Address: 4F, Kashikei Building, 2-19-3 Shinbashi, Minato-ku, Tokyo

東京都港区新橋2-19-3カシケイビル4F

聯繫電話/Phone Number: 03 (3573) 1821

聯繫人/Contact Person: 神葉 綾子 (KAMBA AYAKO)

E-mail: kamba@lukina.jp

<https://www.lukina.jp/>

Kashikey was founded in 1928. Kashikey is a total jewelry company that handles everything from beginning to end; procuring raw materials, design, production, branding, PR, and delivering final products to customers.

The brown diamonds used by KASHIKEY BROWN DIAMOND are reviewed using stringent standards by Kashikey's specialist staff based in India, Belgium, and other locations. We purchase all diamonds directly and only use carefully selected high quality brown diamonds. The sourced loose diamonds are managed with strict control in-house and are categorized by size, shade, and tone. Our stock of vast loose diamonds and meticulous categorization system allow for KASHIKEY BROWN DIAMOND's range of jewelry designs.

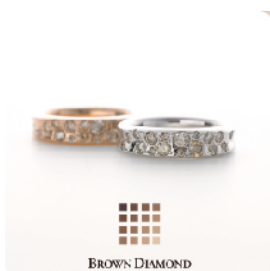
In addition, we use original gold colored settings, including the "Brown Gold" we have developed to enhance the beauty of brown diamonds. Our commitment is reflected in every detail.



① Naked Pave Ring

The Naked series features a nude row of brown diamonds in the same color, and its leaf-shaped motif creates a fashionable form. Its strong sparkle makes an elegant statement with pave set melee.

The micropave setting amplifies the beauty of brown diamonds, highlighting its luxury.



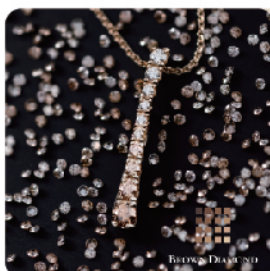
② Melange Band Ring

The Mélange series features skillfully arranged variations of color and shade. This is the result of the craftsmanship of artisans who are thoroughly versed in brown diamonds, offering an exquisite comfortable wear and elegance of the jewelry.



③ Naked Necklace

The Naked series features a nude row of brown diamonds in the same color, with a leaf-shaped motif creating a fashionable form. Its strong sparkle makes an elegant statement.



④ Kashikey the Tone Necklace

From colorless to lustrous brown.

The beautiful sparkle of the gradation of colors is the culmination of the passion Kashikey has pursued for half a century.

Kashikey Tone speaks to the appeal of brown diamonds. It is a piece of jewelry that was created from the skill to meticulously select from a vast quantity of quality diamonds, and assemble them into a gradation.

公司名稱/Company Name: Kashikey Co., Ltd

地址/Address: 2-19-3 Shimbashi Minato-ku, Tokyo, Japan 105-0004

聯繫電話/Phone Number: 03 3575 0811

聯繫人/Contact Person: 高野 雄次 (TAKANO YUJI)

E-mail: takano@kashikey.co.jp

<https://www.browndiamond.jp/>

Established in 1962, Nagahori Corporation is one of the few publicly listed jewelry companies in Japan with 64 years of expertise. Its business spans raw material sourcing, product design, R&D, and sales. With two modern factories in Japan, Nagahori offers diverse production capabilities including casting and forging, delivering both finished jewelry and ODM/OEM services. Through long-term partnerships with domestic and international pearl farms, and strict selection standards, the company ensures consistently high-quality saltwater pearls. This season, Nagahori proudly introduces a rare and precious collection of heart-shaped South Sea pearls.

Nagahori Corporation 成立於1962年，是日本少數上市珠寶企業之一，集原料採購、設計研發、生產銷售於一體，在日本擁有兩座現代化工廠，兼具鑄造與製造工藝。長期合作國內外珍珠養殖場並嚴格篩選，持續提供高品質海水珍珠。本次推出稀有有心形南洋珍珠系列。



The world's first heart-shaped cultured pearl, grown in 14mm+ mother shells and strictly selected for excellence. Rare and refined, only the finest are crafted into high jewelry. Note: Available as finished pieces only. 心形珍珠為全球首創異形海水珠，採用14mm以上母貝孕育，數量稀少。經自然篩選與我司標準嚴格甄選，只採用精品珍珠來製作高級珠寶。

備：此系列只做成品銷售

日本總公司/Japanese Headquarters

公司名稱/Company Name: NAGAHORI CORPORATION (Tokyo Headquarters)
地址/Address: 1-15-3 Ueno, Taito-Ku, Tokyo, JAPAN

株式会社ナガホリ(本社)/東京都台東区上野5-15-3

聯繫電話/Phone Number: 090-3823-7123

聯繫人/Contact Person: 屈暢 (Qu Chang)

E-mail: qu.chang@nagahori.co.jp

<https://www.nagahori.co.jp/corporate>

香港公司/Hongkong Company

公司名稱/Company Name: NAGAHORI (HK) Co.Limited
地址/Address: Room 211, 2/F, Mirror Tower, 61 Mody Rd., Tsim Sha Tsui East, Kowloon, Hong Kong

長城(香港)有限公司/香港尖沙咀東麼地道61號冠華中心211室

聯繫電話/Phone Number: (852) 2312 6885

聯繫人/Contact Person: 胡美詩(Macey)

E-mail: sales@nagahori.com.hk

akoyapearl.jp

Founded in Japan 40 years ago by Australian Bruce Harding, the brand is inspired by gemstones and aims to enhance their beauty, by using carefully selected stones, designs and the finest craftsmen, creating jewelry that will stand the test of time. 四十余年前,由澳大利亞出身的布鲁斯·哈丁先生在日本創立本品牌。自誕生之初,便以天然寶石的璀璨靈韻為靈感源泉。我們嚴苛甄選珍稀寶石,以獨到設計凝練美學,以精湛工藝臻于至臻之境,只為成就一件件歷久彌新的珠寶臻品。它們不僅映耀自然的瑰麗光華,更鐫刻恆久不滅的優雅與永恆



①

14 cts Unheated an amazing new Gem Lagoon Tourmaline, the most beautiful clarity and no visible inclusions.

14 克拉天然瀉湖碧璽
無加熱、淨透無瑕,宛如碧海凝光。



②

Our signature Sea Anemone Ring and a new limited-edition version featuring a lagoon tourmaline.

海葵戒指・限量版
經典設計邂逅瀉湖碧璽,靈動閃耀。



③

The Monarch butterfly or the Northern lights, a very rare 33 carat spectacular Black Opal Pendant and Brooch.

33 克拉黑歐泊吊墜 / 胸針
幻彩流轉,如蝶舞亦如極光,稀世珍罕。



④

A magnificent 27 carat Boulder Opal with all the colours of the rainbow, in our unique B setting

27 克拉鐵礦歐泊
匯聚彩虹色澤,獨家 B 鑲工藝演繹華麗

公司名稱/Company Name: The Bruce Co. (BRUCE KYOTO / DREAMTIME)

地址/Adress: 292 Nonaka cho, Shizuichi, Sakyo ku, Kyoto Japan 601-1122

聯繫電話/Phone Number: 81 75 741 3415

聯繫人/Contact Person: Bruce Harding

E-mail: brucekyoto@gmail.com

<http://kyotobruce.com/>



SJ Jewelry Corporation was established in 1989. We have established a dominant position in the Japanese jewelry market as a wholesaler with a nationwide sales network, supplying precious metal chains made of gold and platinum.

SJ 珠寶股份有限公司創立於1989年。三十多年來，我們深耕日本珠寶市場，憑藉全國性的銷售網絡，成為黃金與鉑金貴金屬鏈條的主要批發商之一，並在業界建立了領先地位。

[RUGGED MIND] made its debut in the fall of 2022 as an original brand of SJ Jewelry Corporation.

It is a genderless, ageless jewelry brand created for those who pursue individuality, freedom, and a life of enjoyment.

「RUGGED MIND」於2022年秋季作為 SJ Jewelry 株式會社的原創品牌首次亮相。這是一個面向那些追求自我、自由、並享受人生的人們的無性別、無年齡限制的珠寶品牌



① Rebuilding / 重構

Rebuilding Khei chains, disassembled and hand-combined in varied sizes, creating unique handcrafted beauty.

重構喜平鍊之美，將機械製作拆解後，以手工隨機組合不同尺寸，展現獨特風貌。



② Chainrings / 鏈條戒指

Solid base with supple chains, delicately hand-finished into a ring of refined sophistication and playful charm.

堅實質感結合鍊條靈動，細膩手工融入戒指，展現成熟而富玩味的設計。



③ Sign of zodiac / 星座

Zodiac rings and pendants, coin-inspired, each hand-engraved by artisans to embody distinctive character.

十二星座化為古幣風格的戒指與吊墜，每件皆由職人手工雕刻，呈現獨特韻味。



④ Twist / 扭曲

Hand-twisted links formed from a single wire, multifaceted surfaces reflecting a refined, intricate brilliance.

手工打造扭轉角線鍊節，自金屬線塑形，多面反射折射出複雜而迷人的光彩。

公司名稱/Company Name: SJ Jewelry Corporation

地址/Address: Tokyo, Taito City, Higashi Ueno 5-1-5 Nisshin Ueno Building 6F

東京都台東區東上野5-1-5日新上野ビル6F

聯繫電話/Phone Number: 03-3847-9908

E-mail: h-sakurai@sjj.co.jp

聯繫人/Contact Person: 桜井 弘行 (Sakurai Hiroyuki)

<https://www.sjj.co.jp/>



We, Crossfor Co., Ltd., are a jewelry manufacturer based in Kofu City in Japan.

Our strengths lie in our proprietary technology and numerous patented products, and we have business partners worldwide.

我們歌思福, 是位于日本山梨縣甲府的珠寶生產商。

獨自的技術和眾多的專利產品為我們的強項,

并于世界各地贏得客戶的信任和支持。



The Dancing Stone is a piece of jewelry that maximizes brilliance by gently moving the gemstone.

靈動鑽石為我們的主要專利技術, 該技術可輕微搖動主石, 令珠寶綻放出最大的光彩。



Sparkling gemstones that enhance a woman's beauty.

Jewelry with ingenuity to maintain that brilliance.

閃耀的寶石可提升女性的魅力。一種可以維持光芒的創意珠寶。



The fine and delicate movement of the dancing stone is created by a specially processed jump ring.

靈動鑽石使用了特別處理的單圈, 實現了細致和優美的搖動。



Versatile enough to be used for a variety of jewelry such as rings and bracelets, also ideal for OEM.

擁有廣泛的使用性, 可應用于各種珠寶如戒指和手鏈。特別適合OEM客。

日本總公司/Japanese Headquarters

公司名稱/Company Name: 株式会社クロスフォー
Crossfor Co., Ltd.

地址/Address: 山梨県甲府市国母7-11-4
7-11-4 Komo, Kofu City, Yamanashi
Prefecture

聯繫電話/Phone Number: 055-232-9640

聯繫人/Contact Person: 大勝ありさ (Okatsu Arisa)

E-mail: overseassales@crossfor.com

<https://crossfor.co.jp/en/>

香港公司/Hongkong Company

公司名稱/Company Name: CROSS FOR HK LIMITED

地址/Address: Unit 211, 2/F, Mirror Tower, 61 Mody
Road, TST-East, Kowloon, Hong Kong

聯繫電話/Phone Number: +852 2312 0059

聯繫人/Contact Person: Gloria Au

E-mail: sales@crossfor.com

<https://www.crossfor-component.com/>

Founded in 1986, AbHeri Corp. crafts fine jewelry renowned for its originality. Handcrafted by skilled artisans in our Tokyo atelier, each piece embodies refined aesthetics and exceptional craftsmanship.

創立於1986年，AbHeri Corp. 專注製作獨創高級珠寶。每一件作品都只在東京工作室由技藝精湛的工匠手工打造，體現精緻的美感和卓越的工藝。



① reticella



② DAMASK



③ Under the Rose



④ Chain-Ring

AbHeri crafts fine jewelry that embodies Japanese aesthetic refinement, using premium materials and artisanal techniques to create timeless beauty.

AbHeri 匠心打造精緻珠寶，體現日本美學精緻韻味，運用頂級材質與工藝技法，創造永恆之美。

公司名稱/Company Name: AbHeri Corp.

地址/Address: FK Bldg. 3F, 1-9-5 Iwamoto-cho Chiyoda-ku Tokyo Japan

日本東京都千代田區岩本町1-9-5 FK大樓3層

聯繫電話/Phone Number: 03-5823-5101

聯繫人/Contact Person: 謝 唯奇 (Xie Weiqi)

E-mail: sya@abheri.com

<https://abheri.com/>



公众号

负责人

KAJI JEWELLERY ART is a designer brand founded by jewellery artist Mitsuo Kaji.

With a creative philosophy of “crafting jewellery that will shine and be loved even 100 years from now,” the brand has cultivated a distinctive artistic world over the past four decades.

Its signature Émaux (enamel) jewellery, blending traditional French techniques with refined Japanese aesthetics, is highly acclaimed as masterpieces of artistic excellence by collectors worldwide.

In 2025, a special exhibition of French Émaux from Kaji’s collection will be held at the National Museum of Western Art in Tokyo, continuing the brand’s mission to share the enduring beauty of Émaux with the world.

KAJI JEWELLERY ART 是由珠寶設計師梶光夫創立的設計師品牌。

品牌的創作理念是“打造即使在百年后依然閃耀、依然被珍愛着的珠寶”。

其代表作“珐琅珠寶”融合了法國傳統工藝與日本獨有的美學視角，被譽為充滿藝術性的杰作，受到國內外藏家的高度評價。

2025年，梶光夫收藏的法國珐琅作品將在東京的國立西洋美術館舉辦特別展覽，持續向世界傳遞珐琅之美的獨特魅力。



“Émaux” is the French term for artistic enamel.

Created through meticulous craftsmanship, Émaux has often been described as “a jewel born of human hands.”

Its graceful beauty carries a timeless allure, embodying the universal value of true artistic creation.

Its elegant brilliance continues to captivate hearts across time—indeed, it is a work of art that deserves to be called eternal.

“Émaux（珐琅）”一詞在法語中意為“藝術七寶”。

珐琅由精湛工藝所打造，被譽為“由人手創造的寶石”。

它那優雅的光輝承載着超越時光的藝術魅力，展現出不朽的美學價值。

這種優美的光彩跨越時間，持續打動人心——堪稱真正意義上的永恆藝術品。

公司名稱/Company Name: Kaji International Co., Ltd.

地址/Address: 3-1-5 Higashi, Shibuya-ku, Tokyo 150-0011, 301 MK Building KAJI TAKESHI

〒150-0011 東京都渋谷區東 3-1-5 MKビル301

聯繫電話/Phone Number: 03-3407-3223

聯繫人/Contact Person: 梶 武史 (Kaji Takeshi)

E-mail: kaji-international@orion.ocn.ne.jp

www.kaji-international.co.jp

OKURADO is a high jewelry maison that embodies the essence of Japan's exquisite craftsmanship. Since our founding in 1969, we have been creating one-of-a-kind masterpieces for the Imperial family and discerning connoisseurs of beauty. Japan is a land blessed with breathtaking nature and the ever-changing harmony of four seasons—a culture where fleeting beauty is cherished and refined sensibilities are nurtured.

Embracing this aesthetic heritage, OKURADO continues to challenge itself through constant innovation, creating "JAPAN MADE" high jewelry that stands among the finest in the world.

OKURADO是一家體現日本精湛工藝精髓的高級珠寶世家。

自1969年創立以來，我們始終為皇室以及追求美學的鑒賞家打造獨一無二的臻品。

日本，這片擁有瑰麗自然與四季流轉的土地，孕育了珍視瞬息之美、涵養細膩感性的文化。

秉承這一美學傳統，OKURADO不斷創新與突破，持續創造享譽世界的“日本制造”高級珠寶。



① Leaves / 翠葉

The Manyo Collection celebrates the sublime vitality of nature through exquisitely sculpted, three-dimensional leaf forms.

Each design draws inspiration from the serene vistas framed by Kyoto's iconic round windows, capturing the fleeting beauty and harmony of the natural world.

This collection embodies OKURADO's commitment to blending timeless craftsmanship with the poetic elegance of Japan's landscapes.

萬葉系列通過精緻雕刻的立體葉形，展現自然的崇高生命力。

每一件設計都汲取自京都標志性圓窗所框出的寧靜景致，捕捉自然世界的稍縱即逝之美與和諧。

這一系列體現了大倉堂將永恒工藝與日本風景的詩意優雅完美融合的理念。



② Camellia / 山茶

The Camellia Collection celebrates the camellia flower, which blooms vibrantly with glossy leaves and brilliant red petals even under the winter sky.

The crimson petals are finished with lacquer, while the white petals are meticulously carved from white coral, capturing the delicate form of the flower.

椿系列展現了寒冬之下依然綻放的椿花，其葉片光澤鮮亮，花瓣紅艷欲滴。

紅色花瓣施以漆藝處理，白色花瓣則以白珊瑚精雕而成，精緻再現了花朵的優美造型。



③ Braiding / 編織

Braiding (Kumihimo) is a traditional Japanese craft with a rich history. In ancient times, braided cords adorned ceremonial garments, samurai armor, and tea ceremony utensils, and today they continue to be used as obijime for kimonos.

OKURADO transforms this time-honored technique into exquisite jewelry, crafted with fine wires of K18 yellow gold, K18 pink gold, and platinum.

編織（組紐）是日本的傳統工藝。

在古代，編織繩被用于禮服、武士盔甲，以及茶道器具的裝飾繩，如今仍用于和服的帶締。

大倉堂將這一技藝融入珠寶設計，采用K18黃金、K18玫瑰金和鉑金細絲精心制作。



④ Knot / 結

Since ancient times, the Japanese have imbued knots with wishes, thoughts, and prayers, believing that each knot holds a mysterious power.

OKURADO has transformed this reverence for knots into exquisite jewelry, capturing both their symbolism and beauty.

自古以來，日本人便在“結”與“結繩”中寄托願望、思念與祈禱，堅信每一個結都蘊含神秘的力量。

大倉堂將對“結”的敬意與情感融入珠寶設計中，精心呈現其象征意義與美感。

公司名稱/Company Name: Atelier Maillet d'or Co., Ltd.

地址/Address: Halifax Shiba Building, 1-3-10 Shibakoen, Minato-ku, Tokyo

東京都港区芝公園1-3-10 ハリファックス芝ビル1F

聯繫電話/Phone Number: 03-6381-5717

聯繫人/Contact Person: 大倉 仁 / OKURA HITOSHI

E-mail: okura@mailletdor.co.jp

www.okurado.co.jp



OKURADO



"etna", Kohsai's premium brand from Japan, offers unparalleled hardness & brilliant luster via unique forging. Fusing master craftsmanship & advanced tech, etna's precise designs evoke deep emotion. Experience the pinnacle of Japanese aesthetics & innovation.

“etna”是光・彩(Kohsai)旗下的高端珠寶品牌，源自日本。其獨特鍛造工藝，賦予珠寶無與倫比的硬度和璀璨光澤。融合精湛匠心與先進技術，“etna”的精準設計喚起深刻情感。誠邀您體驗日本美學與創新的巔峰之作。



① cascade

Inspired by Art Deco architecture, its sharp linear forms and planes can only be achieved through TANZO-forging.

受裝飾藝術建築的啟發，其銳利的線條與平面唯有通過TANZO鍛造工藝才能實現



② cascade engagement ring

A center diamond ring with sleek brilliance, featuring prongs and a setting delicately shaped by TANZO-forging.

一枚以中央主鑽為焦點的戒指，散發出流暢的光彩，其鑲爪與戒台皆由TANZO鍛造工藝精巧塑形而成



③ dazzle of Tokyo

Awarded at JJA Jewellery Design Awards 2023, its sectional lines and planes showcase the height of craftsmanship.

榮獲2023年JJA珠寶設計大獎，其截面線條與平面展現了工藝的巔峰水準



④ wedge

Cut facets on the ring create flashes that shift with angle, a phenomenon born from precise TANZO-forged design.

戒指上的切面隨著角度變化而閃耀光芒，這一現象源自於精密的TANZO鍛造設計

公司名稱/Company Name: KOHSAI CO., LTD.

地址/Address: 3049, Ryuchi, Kai City, Yamanashi Prefecture, 400-0194, Japan

〒400-0194 山梨県甲斐市竜地3049番地

聯繫電話/Phone Number: 0551-28-4182

聯繫人/Contact Person: 河西 佑介 (Yusuke Kasai)

E-mail: jewelryparts@kohsai-qq.co.jp

<https://www.kohsai-qq.co.jp/about/#COMPANY>

PFE is a contemporary art jewelry brand that reimagines the beauty of pearls through bold, modern design. Each piece is meticulously handcrafted in Ise-Shima, Japan—home to some of the world's finest pearls and a rich tradition of craftsmanship.

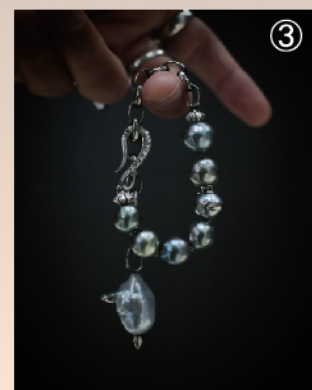
Known for its avant-garde aesthetic, PFE is embraced by fashion-forward individuals across all genders.

Recognized as one of the leading voices in modern Japanese pearl design, the brand has also collaborated with global fashion houses—most notably appearing in Yohji Yamamoto's Y's 2023 Spring/Summer collection.

Using South Sea and Akoya pearls, PFE creates jewelry that blends elegance, creativity, and freedom of expression.

PFE —— 日本藝術珠寶世家

源自伊勢志摩，傳承日本匠心。南洋珍珠與阿古屋珍珠瑩潤光暈，與前衛設計相映，煥發新生。每一件作品皆超越飾品的定義，融匯靜謐與力量，成為跨越時間與性別的永恆優雅象征。



① Pearl Spider Series

② PFE Design Baroque Necklace

③ PFE Bracelet

PFE transforms the tranquil brilliance of pearls into living poetry. The profound glow of South Sea and Akoya pearls is woven with avant-garde design, unveiling an elegance that transcends time. Each creation is not merely jewelry, but an artistic experience—illuminating the distinctive aesthetic sensibility of its wearer.

PFE的珠寶將珍珠的寧謐光華，化為流動詩篇。南洋與阿古屋珍珠的深邃光澤，與先鋒設計交織，彰顯超越時代的雋永魅力。不僅是飾品，更是藝術體驗，映照佩戴者獨特的美學品味。

公司名稱/Company Name: PEARL FAR EAST INC.

地址/Address: 2F, 3-26 Yokaichiba-cho, Ise City, Mie Prefecture Atelier Baroque Room

三重県伊勢市八日市場町3-26-2階 アトリエ バロックルーム

聯繫電話/Phone Number: 0596-27-5416

聯繫人/Contact Person: 田麗紅(Tian Lihong)/+86-13952021049 (中日雙語對應/Bilingual in JP & CN)

E-mail: contact@pfe.jp

<https://baroqueroom.com>

We created cherry blossoms, the symbol of Japanese beauty, on the diamond.

Supreme cutting skills by the professionals in Antwerp, Belgium, made the cherry blossom design possible.

Cherry blossoms will be the symbol of eternal bond for a couple.

經比利時安特衛普的專業人士的精湛切割技術使櫻花成功地綻放于鑽石中。

櫻花將成為情侶永恒的象征。



① SD1571YG



② SD1569P



③ SD1568PG



④ SD1570PG

Sakura Diamonds are high class diamonds and all attached with grading reports. In addition, guarantee card that certifies Sakura Diamond also accompanies with each product.

*Note: this photo is taken with a pink filter on to produce the image of cherry blossoms effectively.

櫻花鑽石是高品質鑽石，每顆均附有等級證書。此外，每件產品還附有一張保證卡，證明其為櫻花鑽石。

*注：此照片使用了粉色濾鏡拍攝，以有效呈現櫻花的意象。

公司名稱/Company Name: Tokyo Kiho Co., Ltd.

地址/Address: AURUM Bldg. 1-26-2, Higashiueno, Taito-ku, Tokyo, Japan

聯繫電話/Phone Number: 81-3-3834-6279

聯繫人/Contact Person: 黃 (Huang)

E-mail: kou.jouchi@tokyokiho.com

<https://www.sakura-diamond.com/index.html>

